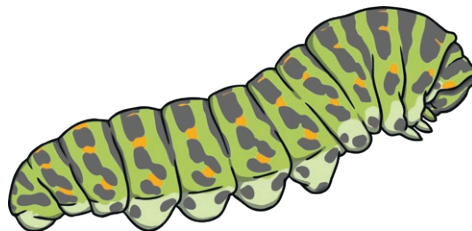
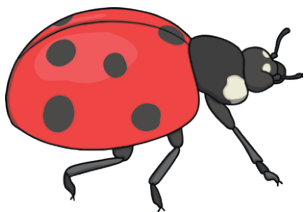
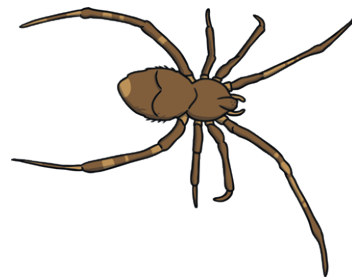


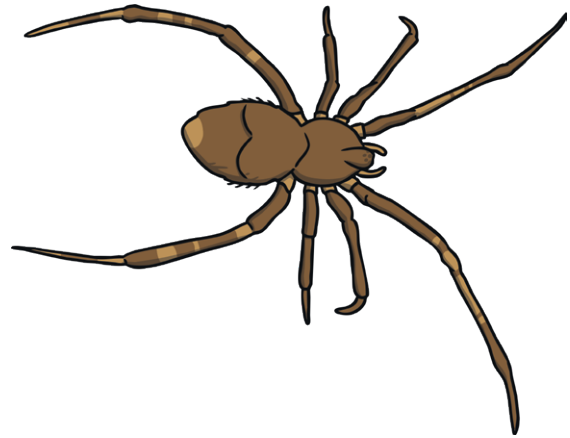
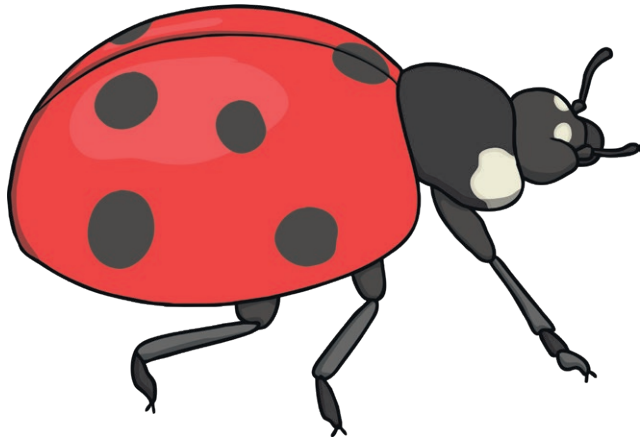
Minibeast Estimation

Can you estimate how many ladybirds are on the poster? Can you explain the number you chose? Can you check by counting?



Minibeast Estimation

Can you estimate which type of minibeast there is most of on the poster? Can you explain your answer? Can you check by counting?



Minibeast Estimation

What do you notice about the number of spiders and ladybirds on the poster?

twinkl.com

Questions to Extend and Deepen Understanding

While the children are completing the challenge, you may like to ask them the following questions:

- What does estimation mean?
- How did you estimate?
- I think there are more spiders than ladybirds. What do you think? How can you check?
- Which minibeast do you think there are most of? Why did you choose that minibeast? How many do you estimate there are?

twinkl.com

Challenge Set-Up Instructions

1. Print and laminate the Minibeast Estimation Poster.
2. Print and display the three differentiated Chilli Challenges, or the appropriate challenge for your children.
3. You may wish to provide optional resources, such as small cubes, that the children can use to check their estimation, by covering and counting, should they wish to do so.
4. When working with the children, you may wish to use the suggested questions to extend and deepen their understanding of counting.